

SF5030A X-RAY BAGGAGE SCANNER



UNIQSCAN: 12 years original manufacturer of X-ray baggage scanner in China



GENERAL SPECIFICATIONS:

- Tunnel Size : 500 (W) ×300 (H) mm
- Conveyor Speed: 0.22m/s
- Conveyor Max Load: 150 kg
- L-shaped array detector, 24bit;
- Single inspection dosage: < 1.32μGy
- Wire Resolution: 38AWG
- Steel Penetration: 10mm
- Film Safety: For ISO 1600

Uniqscan is a 12 years original manufacturer of X-ray baggage scanner and metal detector in China, good quality and perfect after-sales service. For all customer, we provide OEM,ODM and Customized service.

X-RAY GENERATOR

1. Orientation: Upward;
2. Tube Current: 0.4~0.7MA (adjustable) ;
3. Anode voltage: 80KV (adjustable) ;
4. X-ray divergence angle: 60 °;
5. Generator cooling/working periods:sealed oil bath with forced air/100%;

ABOUT US

We owns all of the intellectual property rights (IPR) to its core technologies ,and have a experience engineer team with senior x-ray detection exports, signal and imagine processing specialist . Our excellent technical developing capacity to support us are ability to have continuesly new production lines.



OPERATING ENVIRONMENT :

- ◆ Storage Temperature: -20°C to 60°C
- ◆ Operating Temperature: 0°C to 45°C
- ◆ Relative Humidity: 20 to 95% non-condensing
- ◆ System Power: 220 VAC (±10%) 50±3HZ
- ◆ Power wastage: 1.0 KW (Max)
- ◆ Noise < 65DB

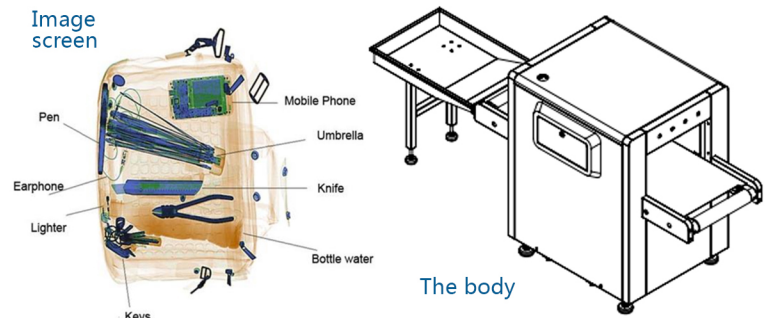
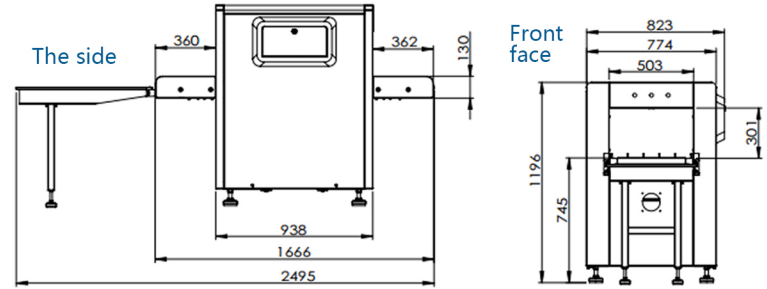
IMAGE PERFORMANCE SYSTEM

- A:** X-ray sensor---L type photodiode array detector (energy), 24 bit depth ;
- B:** Display---High-resolution liquid crystal display, 24-bit color ;
- C:** Color management architectures---Different color, different matter ;
- D:** Inverse、white/black/colorized---For compare these images to find the suspected dangerous goods;
- E:** To eliminate organic、Inorganic out---In view of the most important image;
- F:** Edge enhancement---The edge of image is more clear ;
- H:** High penetration---Make the image more through, for look every goods in one image ;
- I:** Zoom in/zoom out---Make the image bigger ,make the image smaller ;
- J:** 1 times size of image---Make image back to 1 times size of image;
- K:** Brighter/darker---Make image more bright /make image darker ;
- L:** Replay---Playback all images on the screen at current , be able to do the next steps ;

APPLICATION AND CERTIFICATIONS

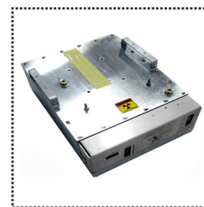
- Used for scenic spots, gymnasium, expo centre, left- baggage counter, supermarket, hotel ,court, prison..etc;
- Machine parts safeguard measures;
- High performance network function;
- Chinese ministry of public security testing;
- EU CE Certification;
- ISO9001 Certification;
- ISO14001 Environmental Management;
- Radiation safety certification from China Government;

DIMENSION DRAWING:



SF5030A X-ray safety detection equipment can display pseudo color and black and white images, with simple and efficient operation, with reasonable human design. We provide a fully intelligent and secure inspection system for our customers.

ACCESSORIES :



X-Ray generator(80KV)
Brand: KV Tech (Beijing)



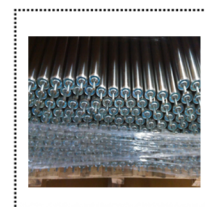
Detection board
Brand: DT (Finland)



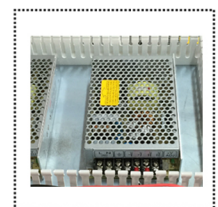
Automatic
Brand: Emerson in USA



Philips 19 inch



Roller
Brand: NSK(Japan)



Power supply
Brand: Meanwell

CONTACT US :

Shenzhen Unisec Technology Co.,Ltd
 Factory : 3/F Building A1, Fenghuang Industrial Park,
 Fenghuang Road, Pinghu Street Longgang District,
 Shenzhen China

Tel: +086-0755-28793799 Fax: +086-0755-28791799